



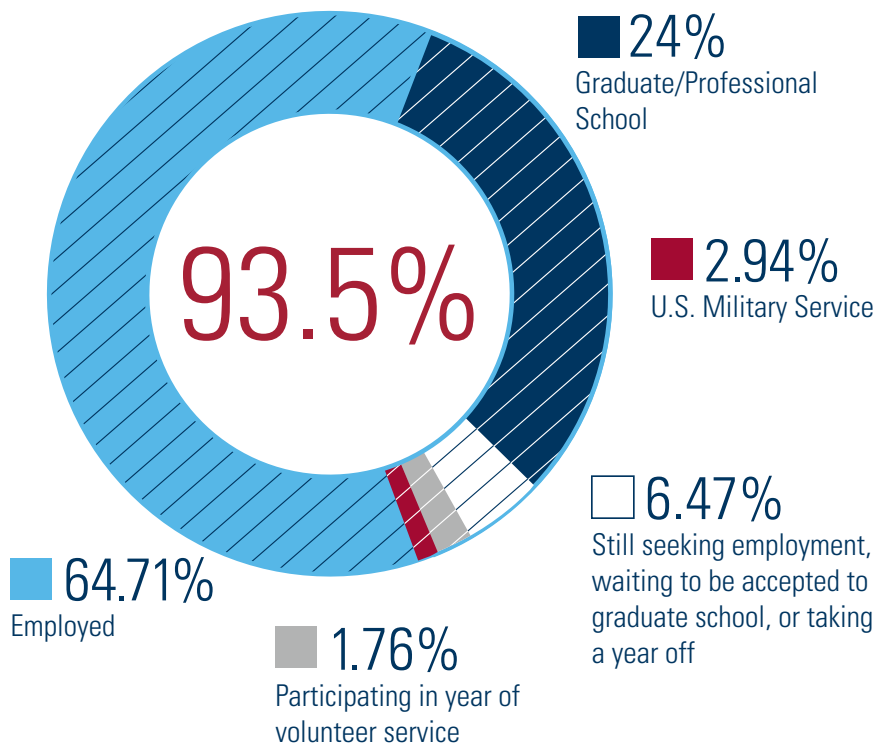
PRESBYTERIAN COLLEGE



FIRST DESTINATION REPORT FOR CLASS OF 2019

UNDERGRADUATE OUTCOMES SUMMARY

Overall, 93.5% of the class of 2019 achieved employment, entered graduate school, participated in service opportunities, or entered the U.S. military.*



SELECT GRADUATE SCHOOL DESTINATIONS

- Clemson University
- Columbia Theological Seminary
- Elon University, School of Law
- Georgia Tech
- Marshall University
- Medical College of Georgia, Augusta University
- Mississippi State University, College of Veterinary Medicine
- Presbyterian College School of Pharmacy
- University of Georgia
- University of Kentucky
- University of North Carolina Wilmington
- University of South Carolina
- Vermont Law School

TOP GRADUATE PROGRAMS BY DISCIPLINE



Accounting & Business



Medicine & Pharmacy



Law

*Report Data Collection

This data was collected by the Career & Professional Development office and is based on a response/knowledge rate of 87.6% of the College's 194 graduates who completed their degree in August 2018, December 2018 or May 2019.

SELECT EMPLOYMENT DESTINATIONS

Aaron's	Freelance Marketing Consultant	Regal Pools & Design
ACC Construction	Global Lending Services	Restoration & Recovery
Ace Hardware	Gray Court Owings School	Rotary Youth Exchange
ADP	Greenville Emergency Center	SC Department of Juvenile Justice
Aerotek	Hill Manufacturing	SC Department of Corrections
Ameriprise Financial Service	IPS Packaging	SC Department of Health & Environmental Control
Anderson School District 5	Isochem Colors	ScanSource Inc.
Applied Technology	Jax Sports	Scientific Research Corp
Avenu Insights & Analytics	JM Steel	Sealed Air Corporation
Bell's Crossing Elementary	KFUM Jamtland Basketball Team	Shellpoint Mortgage Servicing
Camperdown Academy	Klein Oak High School	SIB Fixed Cost Reduction
Campus Outreach	Lake Walls High School	Sonic Automotive
Cargo Barn Inc.	Lexington County Public Library	Sonoco Products Company
Carowinds	Little Mountain Elementary School	Spartanburg Day School
Carteret Health Care	Liberty Doctors	Spartanburg Methodist College
Charles Center for Disabilities	Master Buick/GMC/etc.	State Farm
Colburn Financial	MD Publishing	Stone Brothers
Columbia High School	Michelin	Teach for America
CVS Pharmacy	Moore Colson CPAs & Advisors	Team USA Bobsled Team
DDS	NAVAIR	Terracon
Delta Air Lines	Nolan Transportation Group	Tidelands Health
Developmental Therapy Associates	Nucor Corporation	Total Quality Logistics
Dogwood RV Park	Oak Ridge Institute for Science & Education	Upland Wings Preserve
Dorchester County School District 2	PL Development	UPS
Duke Energy	Premier Press	US Anesthesia
Easley Presbyterian Church	Presbyterian College	US ARMY
Eastside Elementary	Progressive Insurance	US MARINE CORP
Enterprise Holdings Inc.	PURE Insurance Group	UTI Drilling
Flagler College	Ramey Kemp Associates	Wells Fargo
Franklin Street		

SELECT JOB TITLES

AP Factory Specialist
 Business Scientist
 Clinical Pharmacist
 Data Engineer
 Field Engineer
 Guide & Director of Marketing
 Laboratory Technician
 Market Risk Analyst
 PA Assistant
 Pharmacist
 Professional Athlete
 Resident Director
 Transportation Associate

TOP EMPLOYER STATES



AVERAGE REPORTED SALARIES BY MAJOR

Business Administration	\$42,000
Biology	\$30,000
Economics	\$44,000
Education	\$34,500
Political Science	\$31,200

Career & Professional Development

503 S. Broad Street, Springs Student Center, Clinton, South Carolina 29325
 864.833.8379 | careerservices@presby.edu | www.presby.edu/careers