

SUMMER SEMESTER  
MAY 18<sup>TH</sup> - JUNE 12<sup>TH</sup> 2026

# Lyon, France

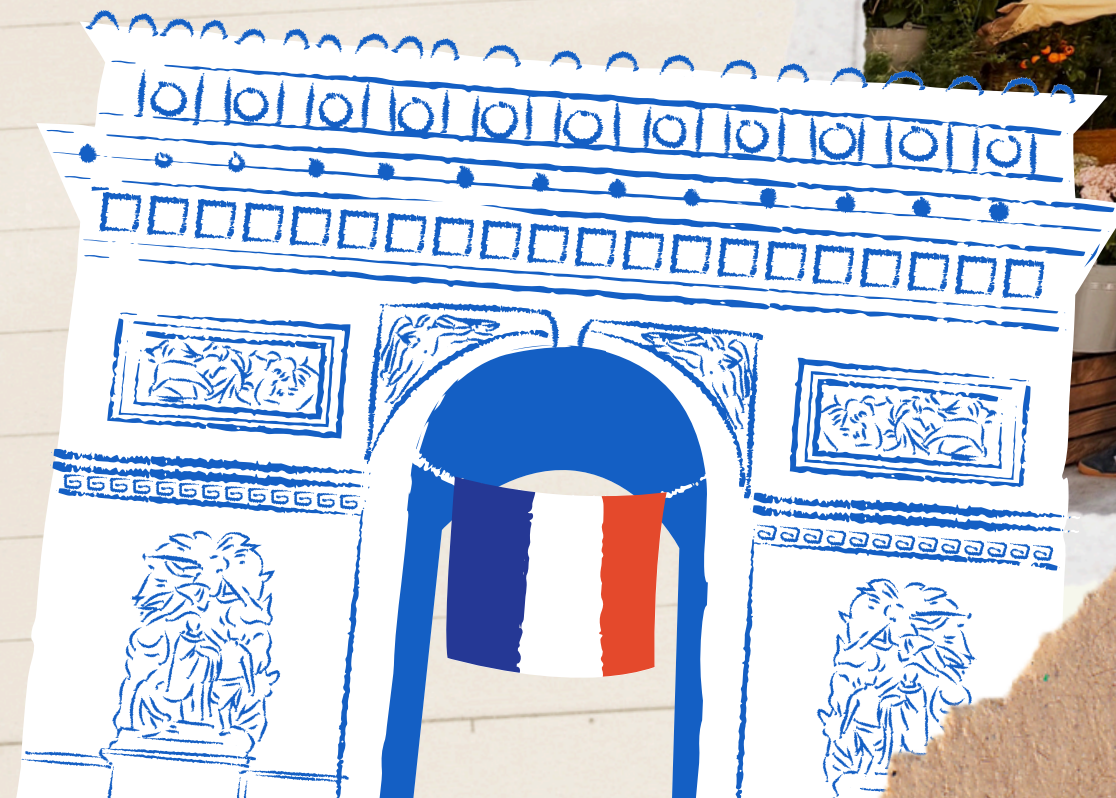


# Where is Lyon?

[Click Here for Video Link](#)



*Bonjour*



# Program Cost

YOU purchase the round-trip air ticket (approx. \$850-\$1200.00)

YOU pay the study abroad fee of \$1575.00. The fee includes:

- furnished (studio) apartment
- 6 transfer credits from our partner university (IDRAC)\*
- cultural excursions in and outside of Lyon (vineyard, chocolate factory, boat tours, museum visit)
- medical insurance



merci



*Vive La France*



# Credits:

\*4 US credits "International Business Communication"

\*1 US credit "French as a Foreign Language" [Beginning, Intermediate, or Advanced level]

\*1 US credit "The Culture of France"



# Quick Facts

## Program Dates:

- Move-in: Monday (Friday, May 15 OR Monday May 18)
- Move-out: Friday morning by noon (June 12, 2026)
- Courses are usually scheduled T, W, R from 9-12 and 1-4.

Do not book outside travel in France/Europe until you receive your class schedule in late April or early May.

3 or 4 cultural excursions during the program.



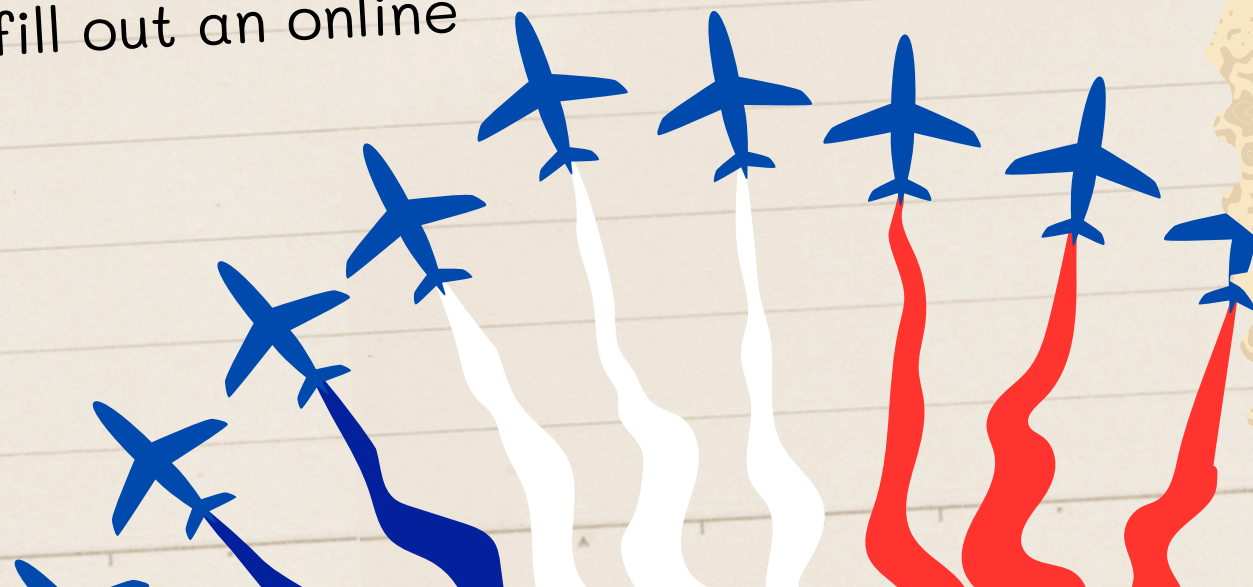
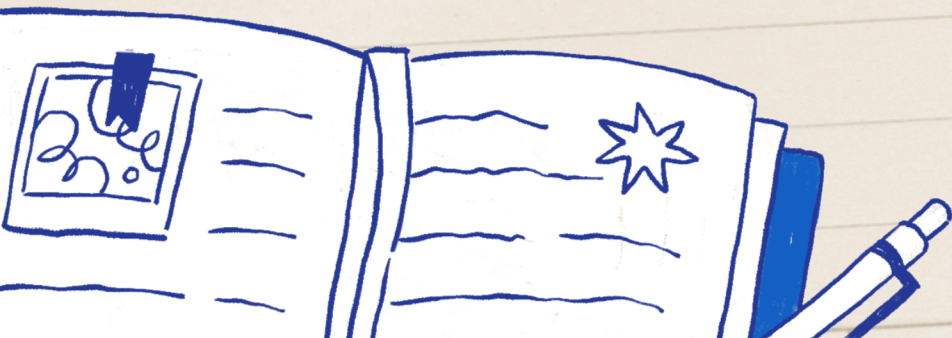
# Deposits / Misc.

Full payment of study abroad fee (\$1575.00) is expected by April 1, 2026. It will be charged to your student account.

Apartment deposits will be made in late April. You will send these via international wire transfer. [Approx. cost 365 Euros] The housing deposit is refunded once you vacate the apartment

The staff at IDRAC will require you to fill out an online application for admission.

*Vive la France*



# Next Steps

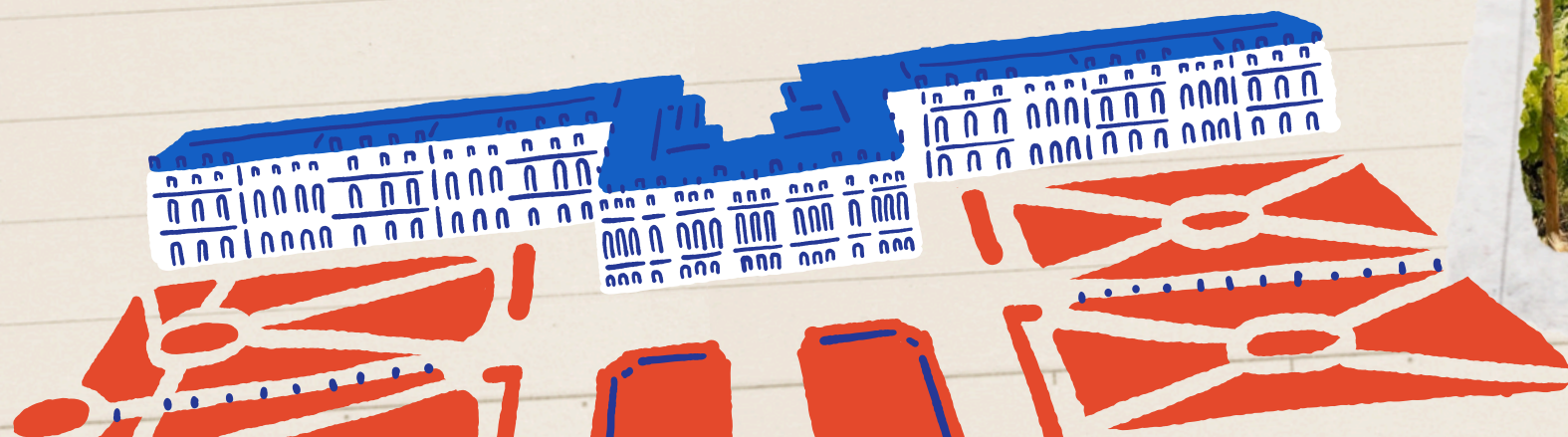
Program is limited to 12 students.

Complete your online application soon. (Office of International Programs)

<https://www.presby.edu/academics/international-programs/>

Pay your 1st deposit \$575.00 by Nov. 1, 2025); pay the remaining balance by April 1, 2026.

Open to ALL PC students regardless of language level.





# Lodging

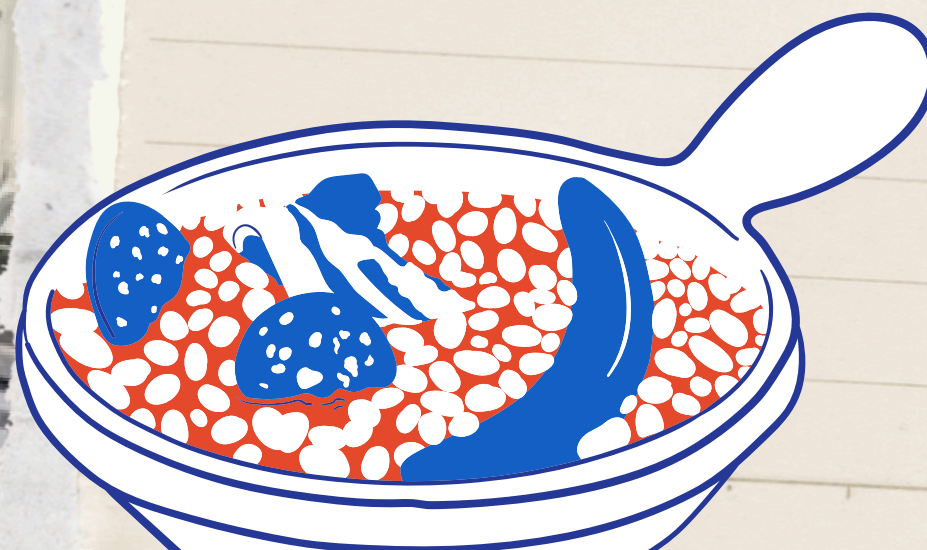
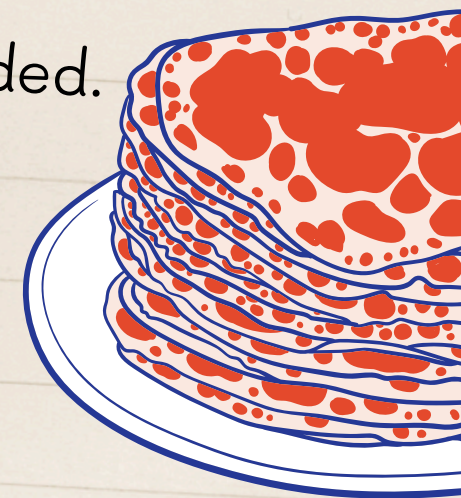


All students are lodged in furnished, studio apartments.

Kitchens are equipped with basic cooking supplies.  
(plates, forks, pots)

Twin, bed linens AND bathroom towels are NOT provided.  
You must bring your own or purchase sheets in Lyon.

Apartments are, on average, a 10-minute walk to the university.



*Lonely journey*



# Thank You!

