

*Students have walked through these doors for*

**108 Years**

PRESBYTERIAN COLLEGE  
**NEVILLE  
RENEWED**









Originally Built in

1907

Students have walked through these doors for 108 years

Last update in

1988

### Departments

- English
- Religion & Philosophy
- History
- Modern Foreign Languages

179

Number of Courses taught each year in Neville



# NEVILLE HALL

Built on the highest grounds of the campus in 1907, PC's iconic Neville Hall stands as the focal point of the West Plaza. Its colonial-styled Georgian architecture set the pattern for all future buildings on the campus. This significant structure was named to honor the legacy of Dr. William G. Neville, who was president during the first decade of the century and who was very successful in extending the college's physical campus and PC's influence in South Carolina. Today, Neville Hall plays a crucial role in our students' educational experiences, serving as one of the main classroom facilities on campus. Faculty lead graduating seniors through Neville, exiting the main entrance to march to Commencement Exercises on the Plaza at Graduation. As the most endeared building to PC alumni, Neville Hall is at the very center of the heart of campus and continues to impact the lives of all PC students.

## Neville's Features

120

Seat Auditorium

14

Classrooms

6

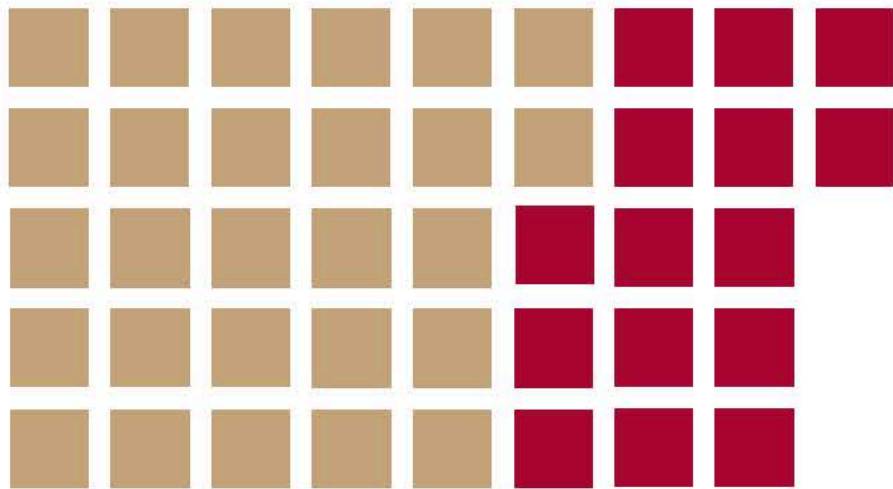
Seminar Rooms

30

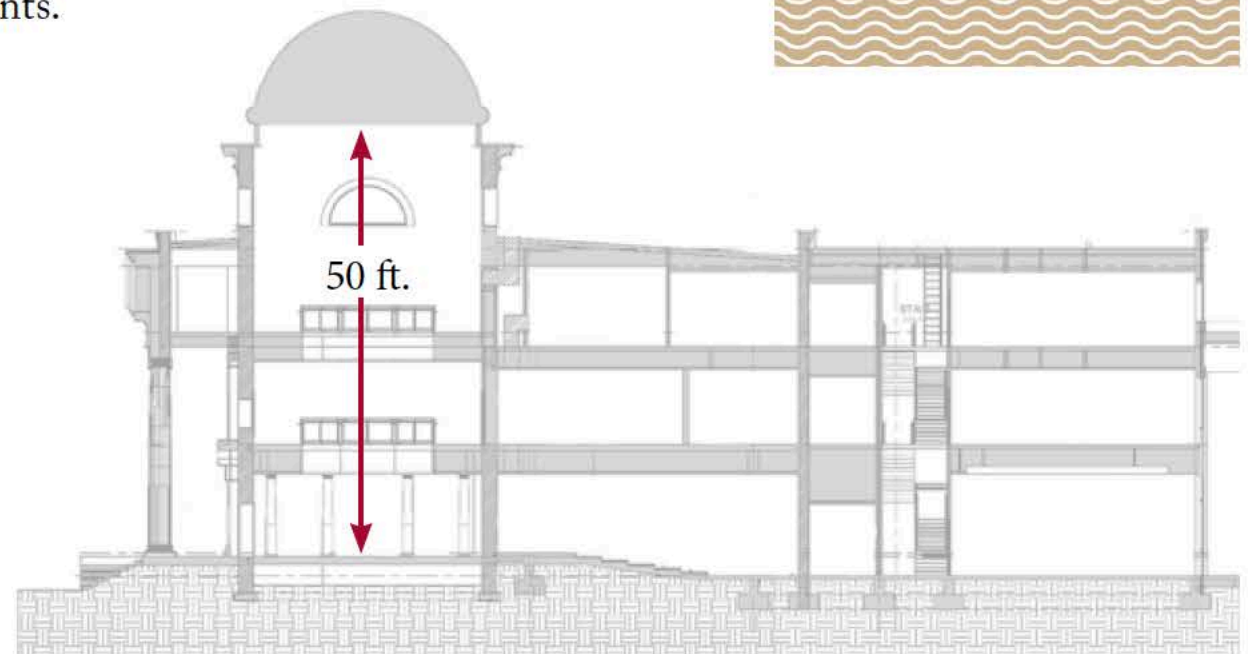
Faculty Offices

Plus

Writing Center  
Language Lab  
Student Lounges



26,870 sq ft. original building 14,550 sq ft. additional space



Restored rotunda opening up 3 floors and 50 ft.



Georgian architecture gets its name from the succession of English kings named George (beginning in 1715). In the United States, the style included innumerable variations on a simple English theme: a symmetrical, two-story house with center-entry façade, combined with the two-room-deep center-passage floor plan.

Two Ionic columns, modeled after ancient Greek designs with ornate scroll-shaped ornaments on the capital, frame the entrance to Neville Hall.

### CONCEPT RATIONALE

Restored open rotunda

Well-distributed classrooms, seminar rooms & student centric spaces

Centrally located auditorium, writing center & language lab